

# WHAT WORKS

## Ireland Evidence Hub

### Webinar

John Cole DCEDIY 19<sup>th</sup> October, 2022

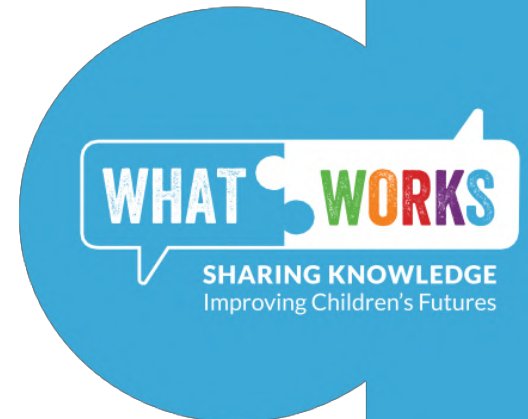
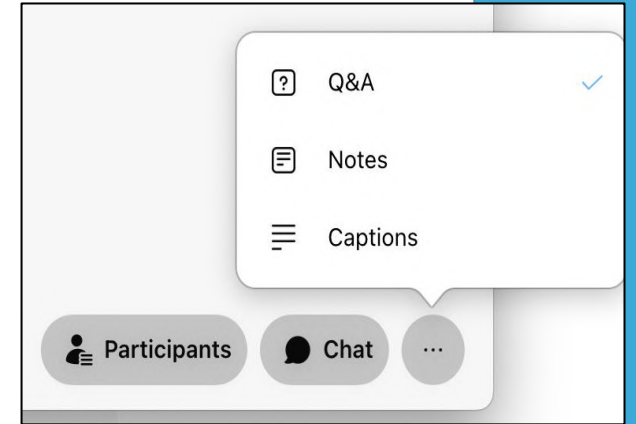


**An Roinn Leanaí, Comhionannais,  
Míchumais, Lánpháirtíochta agus Óige**  
Department of Children, Equality,  
Disability, Integration and Youth



# Housekeeping

- Your camera and mic will be turned off during the webinar, only the presenters will be seen and heard
- If you have a question during the webinar, please type it in **the Q&A box** (click on bottom right corner of screen) and submit it to 'All Panellists'.
- If your question is not addressed during the session, or you have any further questions that were not covered in today's webinar, please direct them to: [whatworks@effectiveservices.org](mailto:whatworks@effectiveservices.org)
- This webinar will be recorded and will be available to view on the What Works Ireland website:  
<https://whatworks.gov.ie/what-works-ireland-evidence-hub/>



**PARTNERSHIP AND INCLUSION**



**SPIRIT & SCIENCE**

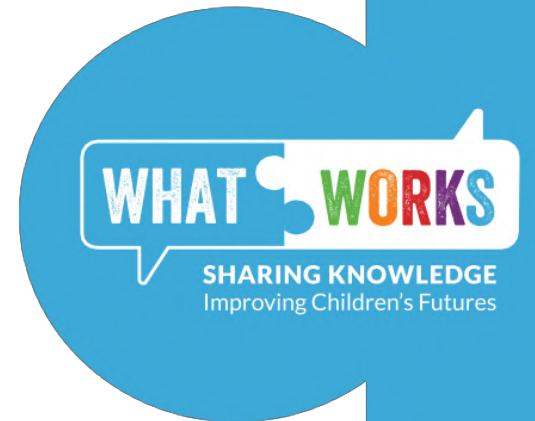


**SHARING KNOWLEDGE, TRANSFORMING LIVES**



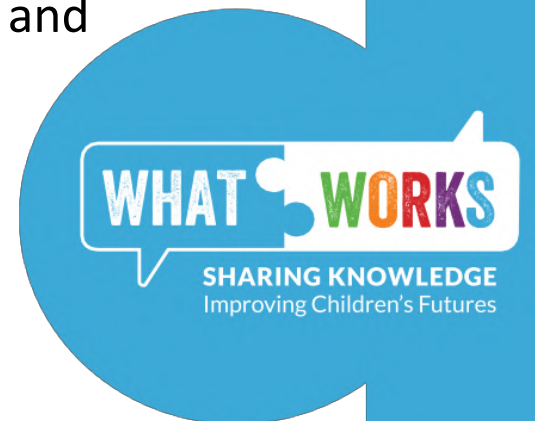
# Why establish What Works?

- We wanted to move from crisis intervention to Prevention and Early Intervention (PEI) with an enhanced focus, in particular, on evidence and outcomes, streamlined service delivery and integrated systems
- We wanted to focus on a growing adoption of scientific methods to measure impact of services for children – the evidence base!
- We wanted to drive increased investment in PEI across all areas that affect children and young people in Ireland, building a robust infrastructure to drive that (PEI a strategic objective for the Dept)
- We all know: If PEI is based on best available evidence, using the best approaches and delivered by the best placed people, this has significant benefits for children, young people and their families and is also an effective and efficient use of resources



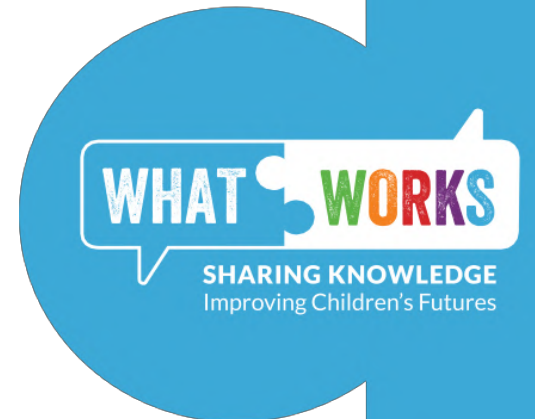
# Why establish What Works?

- There has been considerable policy, practice and organisational developments in the range of sectors and settings working with and for children and young people
- There is clear international evidence on the long-term cost-effectiveness of PEI programmes in reducing the long-term need for more costly interventions throughout the child's life. More bang for your buck!
- It was developed to harness the learning from over €200m co-investment from Government and philanthropy in PEI and to apply this learning systems-wide
- It aims to secure a return on investment and impact from PEI initiatives to support learning and up-skilling for policy makers, providers and practitioners working with children and young people. DPER PEI Unit established. The Groundwork started in 2016 with a landscape analysis, national/ international expertise, consultations
- WHAT WORKS was formally launched in 2019. Current 2022 budget €2.2m



# So - What is What Works?

- WHAT WORKS played a critical role in progressing prevention and early intervention as a transformational goal and cross-sectoral priority under Better Outcomes, Brighter Futures, the National Policy Framework for Children and Young People 2014 - 2020 and will in the forthcoming successor Framework in 2023 – PEI Key
- WHAT WORKS takes a co-ordinated approach to enhance capacity, knowledge and quality in prevention and early intervention policy, service and practice
- WHAT WORKS aims to maximise the impact of prevention and early intervention to improve outcomes for children and young people living in Ireland



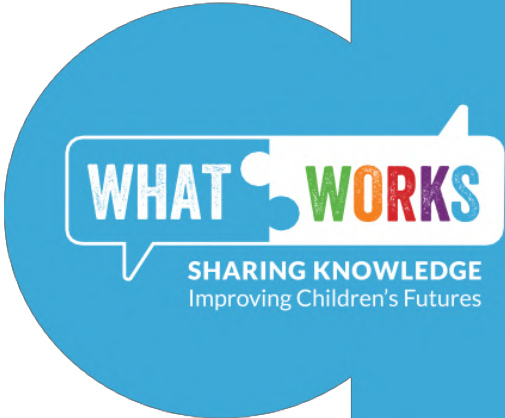
# What is What Works About?

In order to embed Prevention and Early intervention in the systems surrounding children, young people and their families, we identified four stands that required focussed effort:

4 Strands:

- Enhancing access and use of data
- Enhancing access and use of evidence (the Evidence Hub)
- Supporting the capacity development of the workforce to adopt an evidence informed approach to prevention and early intervention services
- Developing mechanisms that guarantee quality assurance in prevention and early intervention

# Embedding Prevention and Early Intervention into the System

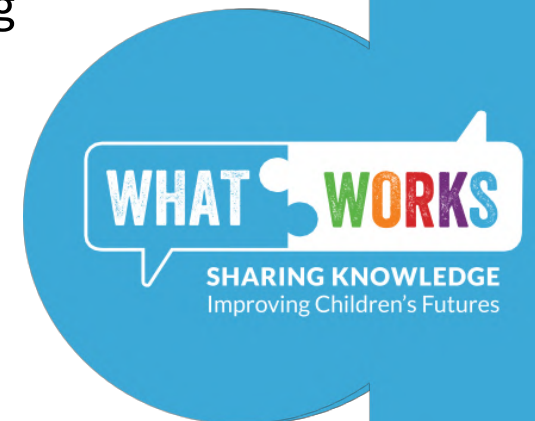




# What is What Works About?

*You may ask: But what difference is What Works making?*

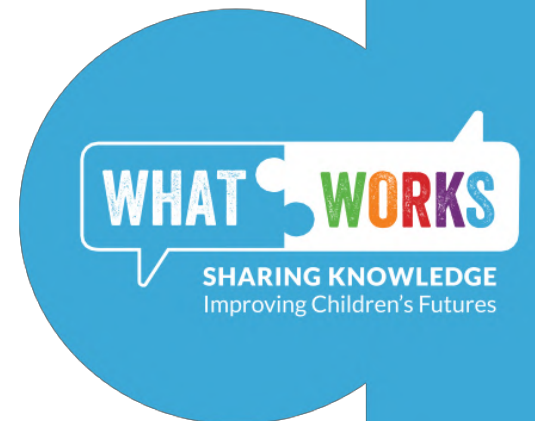
- WHAT WORKS has, for the first time in Ireland, brought together the key learning in prevention and early intervention from different initiatives, practice fields and organisations which speaks to and supports the needs of children, young people and their families and translates this in a strategic and practical approach
- WHAT WORKS will improve the access, understanding, quality and use of data and evidence through resource development and training and coaching – this has been evident via feedback and evaluation reports from our various funding initiatives and projects (Digital Solutions fund, Training Fund, Learning Together Fund and Sharing Knowledge Fund 2022. Action Learning, Quality Implementation Training, Annual Festival of Learning, Tusla PEI projects, etc.) – we want to look further at data



# What is What Works About?

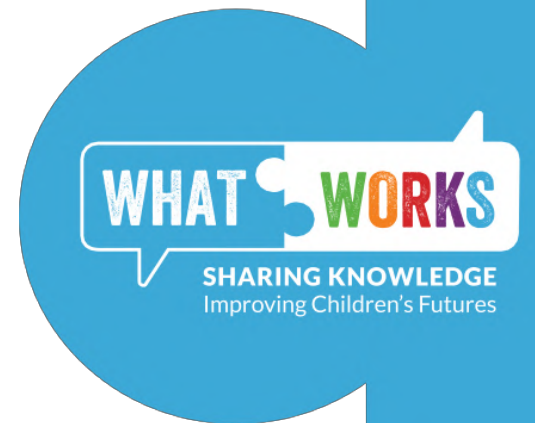
- SUM UP:

- ❑ What Works is designed to nurture, grow and champion evidence-informed prevention and early intervention approaches
- ❑ What Works is a co-ordination effort to support a whole system approach to prevention and early intervention in Ireland



# Why the What **WORKS** Ireland Evidence Hub?

- The online Evidence Hub is a first for Ireland and will speak to an Irish audience and help practitioners from an Irish perspective - utilise evidence/best practice
- The Evidence Hub will help to harness the learning from PEI initiatives and research, and actively support the use of this learning as a source and resource to inform planning, delivery, evaluation and continuous improvements
- It will make the best evidence on what works available to policy makers, service commissioners, providers and other audiences and help in their decision making about services for children and young people – basically, anyone with an interest in PEI



# Improving Access and use of Evidence

The image shows a screenshot of the EIF Guidebook website and its mobile app interface. The website header includes the Early Intervention Foundation logo, navigation links for 'Help', 'EIF evidence standards', and 'About the Guidebook', and a 'Guidebook' button. The main heading is 'EIF Guidebook' with the subtitle 'Injecting evidence into the commissioning and design of early intervention in the UK'. A text block states: 'The EIF Guidebook provides a wealth of information about over 100 early intervention programmes that have been shown to improve child outcomes. To help you make the decisions that impact upon the lives of children and young people in your area, we help you to answer questions like:'. A list of five questions follows, such as 'Is there evidence that this programme has achieved positive outcomes for children and young people?'. A smartphone displays the app's search interface with filters for 'Programme categories', 'Age groups', and 'Filter programmes'. The URL 'Guidebook.EIF.org.uk' is shown at the bottom. Logos for 'On The Right Track' and 'CES Produced by' are also visible.

- Working with Early Intervention Foundation UK (EIF) and Centre for Effective Services to develop the Evidence Hub
- Collaborative Project
- What Works Website – Online User Interface Q1 2023 –easy to access

WHAT WORKS

SHARING KNOWLEDGE  
Improving Children's Futures

# WHAT WORKS

SHARING KNOWLEDGE  
Improving Children's Futures



**WHAT WORKS** is an initiative led by the Department of Children and Youth Affairs, with funding from Dormant Accounts, to support a move towards evidence informed prevention and early intervention services for children, young people and their families.

**WHAT WORKS** is about working together to ensure that Ireland is one of the best countries in the world for our children and young people to grow up.

**WHAT WORKS** is about bringing together, sharing, questioning and using all the evidence we have about what works to improve children and young people's lives today so that they may have brighter tomorrows.

**WHAT WORKS** is about fostering persistent curiosity amongst those working to improve the lives of children and young people in Ireland.

**WHAT WORKS** is about supporting those working with and for children, young people and their families in doing the right things, in the right way and at the right time.

It's good to share. Learn **WHAT WORKS**

## WHAT WORKS THE STORY SO FAR...



### USING DATA



Easy access and effective use of data is critical to improving children and young people's lives. Effective use of data can be a powerful tool to build stronger services for children and young people, and ensure the appropriate allocation of resources.

[READ MORE >](#)

### USING EVIDENCE



Designing policies, services, programmes or interventions that help improve children and young people's lives is not easy. Evidence of what has worked in the past, in particular places and with particular resources can help us in our decisions.

[READ MORE >](#)

### LEARNING & DEVELOPMENT



Easy access to data and evidence about what works in improving children's lives is only part of the jigsaw. It is the start of a conversation, not the end. People and services working to improve children and young people's lives need skills, knowledge and tools to interrogate the data and evidence. Professional judgement, experience and practice wisdom is central to understanding the story behind the data and evidence.

[READ MORE >](#)



Which actor in the economy is most responsible for making radical innovation happen?

[CLICK HERE >](#)



'We need to break the cycle' - Dublin hero Philby McMahon delivers Tedx talk to Mountjoy prisoners

[CLICK HERE >](#)



What Works - Launch Event

[CLICK HERE >](#)

# www.whatworks.gov.ie

# WHAT WORKS

SHARING KNOWLEDGE  
Improving Children's Futures

# What Works Ireland Evidence Hub - Webinar for programme providers

Jack Martin, Early Intervention Foundation

19/10/22



An Roinn Leanaí, Comhionannais,  
Míchumais, Lánpháirtíochta agus Óige  
Department of Children, Equality,  
Disability, Integration and Youth



ciste na  
gcuntas díomhaoin  
the dormant  
accounts fund



The Centre  
for Effective  
Services



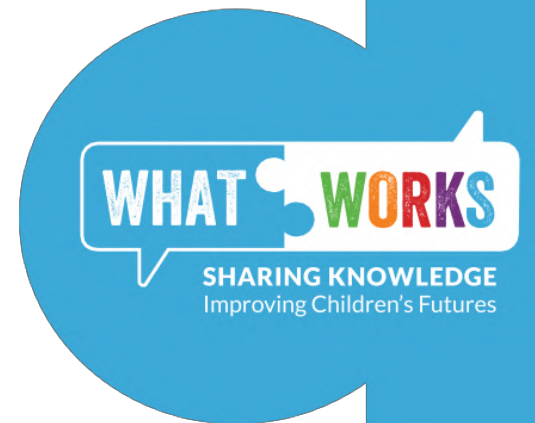
EARLY  
INTERVENTION  
FOUNDATION



SHARING KNOWLEDGE  
Improving Children's Futures

# What we'll cover

- What is the Evidence Hub?
- What information will be included on the Evidence Hub about programmes?
- How do I get my programme included on the Evidence Hub?
- Next steps and questions



# What is the Evidence Hub?

- What is it?
  - A searchable online database of information about prevention and early intervention programmes.
  - Containing information on **delivery and implementation**, the **evidence-base**, and the **costs and benefits** associated with programmes.

## Example Programme

Example Programme is a targeted-selective programme for children between the ages of 8 and 12. It is designed to prevent antisocial behaviour and substance abuse in children from low-income families.

Evidence rating: 3+

Cost rating: 1

Child outcomes:

Preventing substance abuse  
Preventing crime, violence and antisocial behaviour

UK provision: Yes

Age group:  
Preadolescents

Delivery model: Group

Setting:

Primary school  
Secondary school  
Community centre

Classification:  
Targeted selective

*How strong is the evidence?*

*What does it cost?*

*What can it achieve?*

*What does it do?*

*Is it in the UK already?*

*Where does it all happen?*

*Who is it for?*

*Universal or targeted?*

WHAT WORKS

SHARING KNOWLEDGE  
Improving Children's Futures



# What is the Evidence Hub?

- What is it?
  - A project under the What Works Initiative, developed as a collaboration between DCEDIY, the Early Intervention Foundation, and the Centre for Effective Services.
  - Based on the Early Intervention Foundation's Guidebook.



WHAT WORKS

SHARING KNOWLEDGE  
Improving Children's Futures

# EIF's Guidebook

- EIF was established in 2013 and is one of the UK Government's What Works Centres, organisations designed to support the generation and use of evidence to support the design and delivery of public services.
- Our Guidebook launched shortly afterwards:
  - Focuses on **programmes**
  - Focuses on programmes with at least some **preliminary-level evidence of impact** (as well as those with robust evidence)
  - Includes evidence **from around the world**, not just the UK.
- Now adapted and added to to be as useful as possible for Irish audiences, in the form of the Evidence Hub.

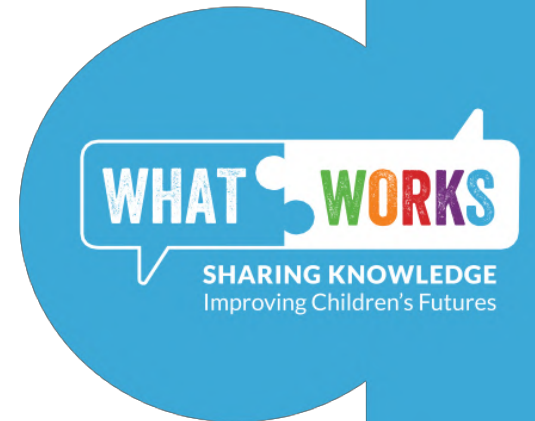


WHAT WORKS

SHARING KNOWLEDGE  
Improving Children's Futures

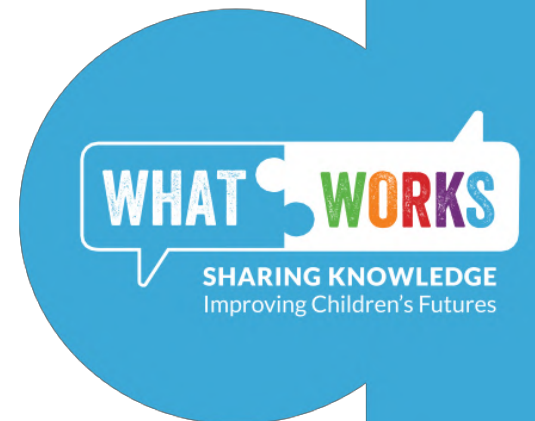
# What is the Evidence Hub?

- Who is it for and what is its purpose?
  - To support the use of evidence in early intervention and prevention policy and practice for children and young people. In particular by supporting policy-makers and service commissioners to invest in effective, evidence-based intervention.
  - The Evidence Hub may also be useful for **practitioners** by providing examples of best practice, providing information on how programmes have been delivered, and by providing information on the methods of delivery that have been used in previous successful implementations.
  - The Evidence Hub may also be useful for **evaluators** by providing information on how programmes have been evaluated in the past, and where those evaluations have encountered issues in their design or implementation.



# What is the Evidence Hub?

- What do we think users need to know about the Evidence Hub before they use it?
  - The Evidence Hub is not an exhaustive list of prevention and early intervention programmes (yet).
  - The Evidence Hub is not a list of 'approved' or kitemarked programmes. Nor does simply being included on the Evidence Hub mean a programme has robust evidence of effectiveness.



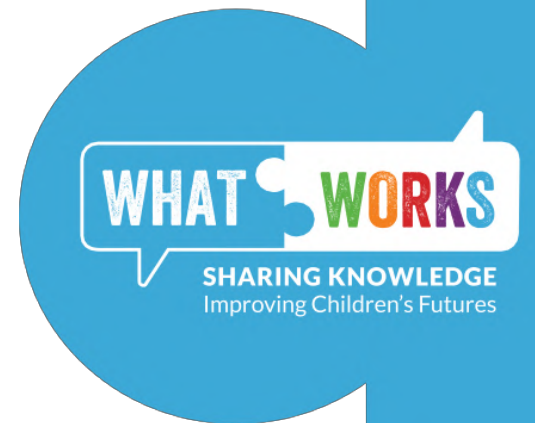
# What is the Evidence Hub?

- What do we think users need to know about the Evidence Hub before they use it?
  - While the evidence rating is important information, a high rating is not a guarantee and does not mean a given programme is right for any given context.
  - The information in the Evidence Hub should be used to supplement professional judgement and knowledge of local contexts and needs.

- ✓ Age group
- ✓ Sex
- ✓ Ethnicity
- ✓ Language
- ✓ Socio-economic status
- ✓ Level of risk
- ✓ Implemented & evaluated in Ireland
- ✓ How it was delivered and by whom

# What sort of information about programmes will be included on the Evidence Hub?

- Ratings and summary information
- Information on key programme characteristics
- Information on theory of change and implementation
- Information on evidence-base



# Ratings and summary information

Evidence rating

3

Cost rating

1

## Child outcomes

According to the best available evidence for this programme's impact, it can achieve the following positive outcomes for children:

### Enhancing school achievement & employment

Increased school performance

[More detail +](#)

### Preventing crime, violence and antisocial behaviour

Reduced arrests for violent crime

[More detail +](#)

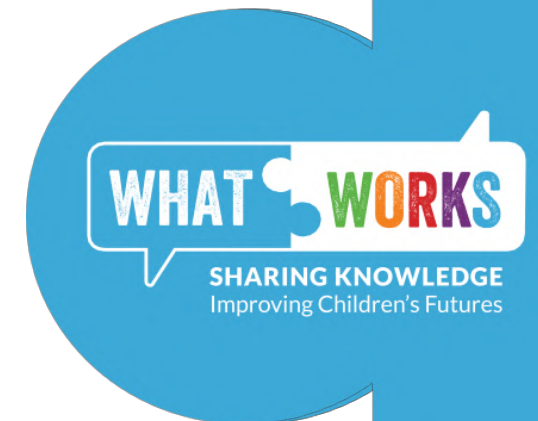
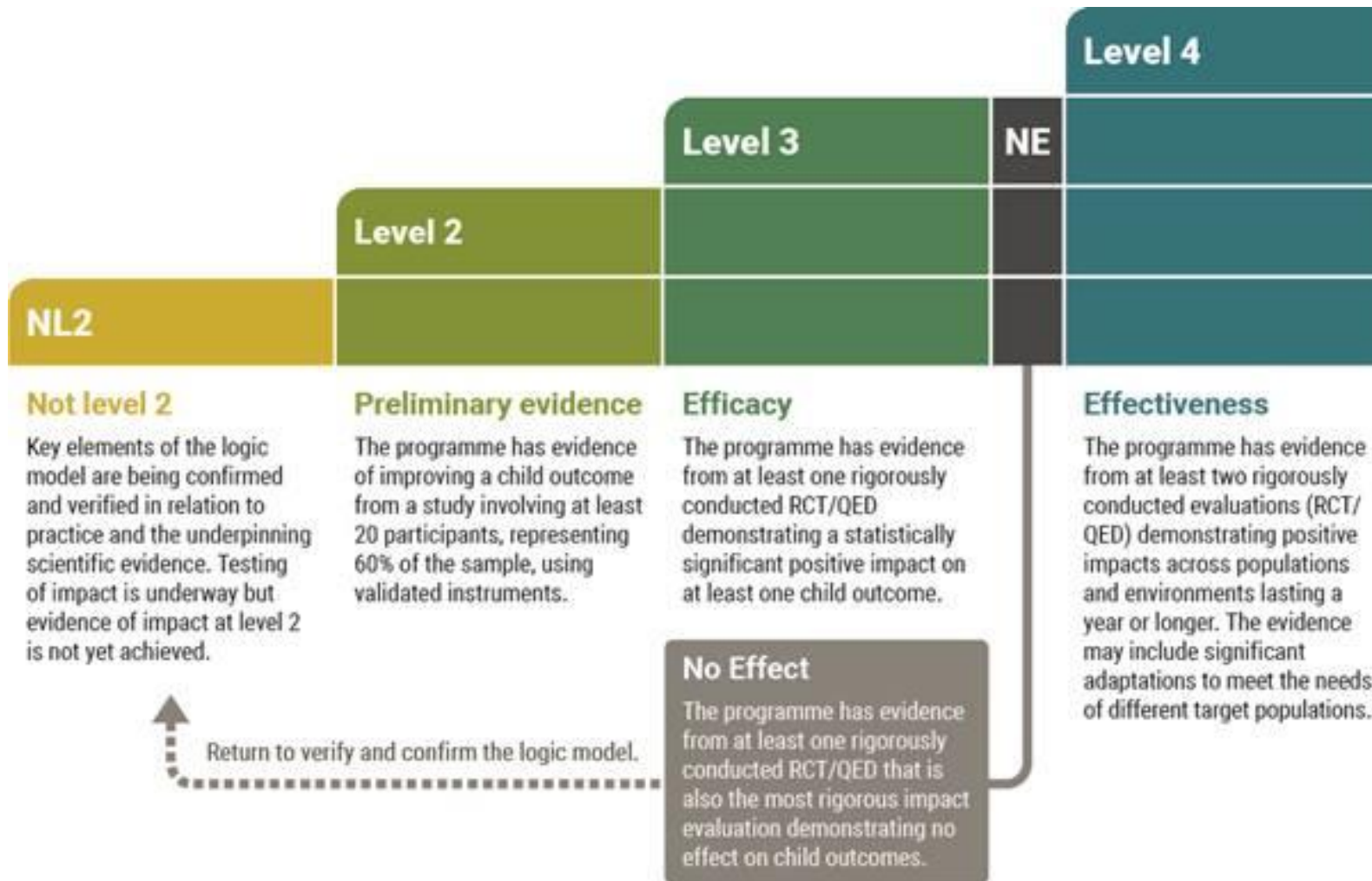
Reduced arrests for all crime

[More detail +](#)

WHAT WORKS

SHARING KNOWLEDGE  
Improving Children's Futures

# Strength of evidence rating





# Key programme characteristics

## Who is it for?

The best available evidence for this programme relates to the following age-groups:

Preschool

Primary school

## How is it delivered?

The best available evidence for this programme relates to implementation through these delivery models:

Group

## Where is it delivered?

The best available evidence for this programme relates to its implementation in these settings:

Children's centre or early-years setting

Primary school

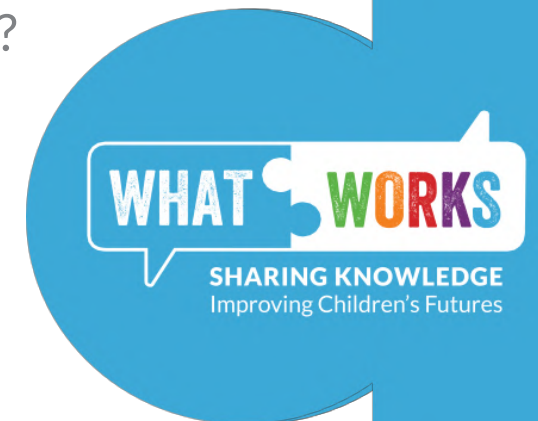
Community centre

## How is it targeted?

The best available evidence for this programme relates to its implementation as:

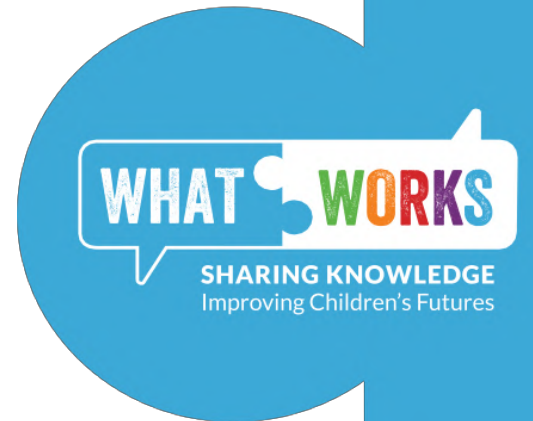
Targeted selective

- Also:
  - Where has it been implemented?
  - Has it been delivered in Ireland?
  - Has it been evaluated in Ireland?



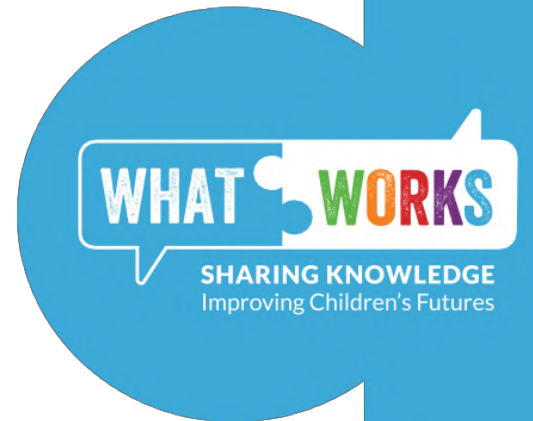
# Information on implementation and theory of change

- **How is it delivered?** – ‘The programme is delivered in 6 sessions of 30-minutes duration. These are delivered to parents’.
- **Who can deliver it** – ‘The programme is delivered by a mental health professional, with NFQ 6-level qualifications’.
- **What are the training requirements?** – ‘Mental health professionals receive 21 hours of programme training each, no booster training is required’.
- **How are practitioners supervised?** - ‘It is recommended that practitioners are supervised by one programme developer supervisor (qualified to NFQ 9-level)’.
- **What are the systems for maintaining fidelity?** – ‘Training manual and video-taped observations of sessions’.



# Information on implementation and theory of change

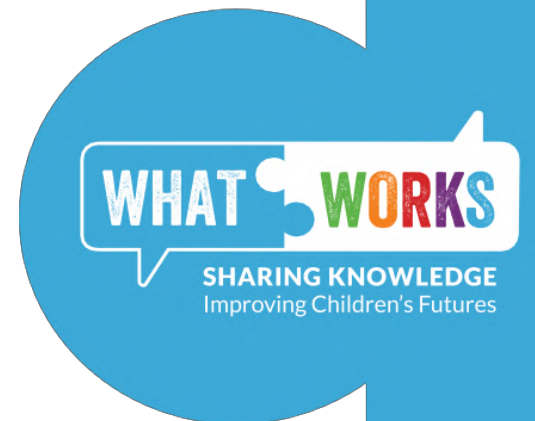
- **What are the risk and protective factors your programme intends to affect?**  
– e.g. ‘Positive and sensitive parent/child interactions in the early years are critical for social/emotional development’.
- **How does your programme affect the risk and protective factors?** – ‘The programme provides parents with support to reduce psychosocial stress and so reducing difficulties in responding positively to their children’.
- **What are the short-term aims of the programme?** – ‘In the short term, parents experience less stress and develop positive representations of their child’.
- **What are the long-term aims of the programme?** - ‘In the longer term, children demonstrate improved mental health’.



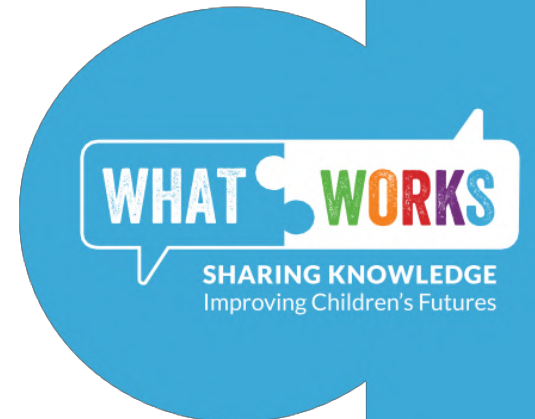
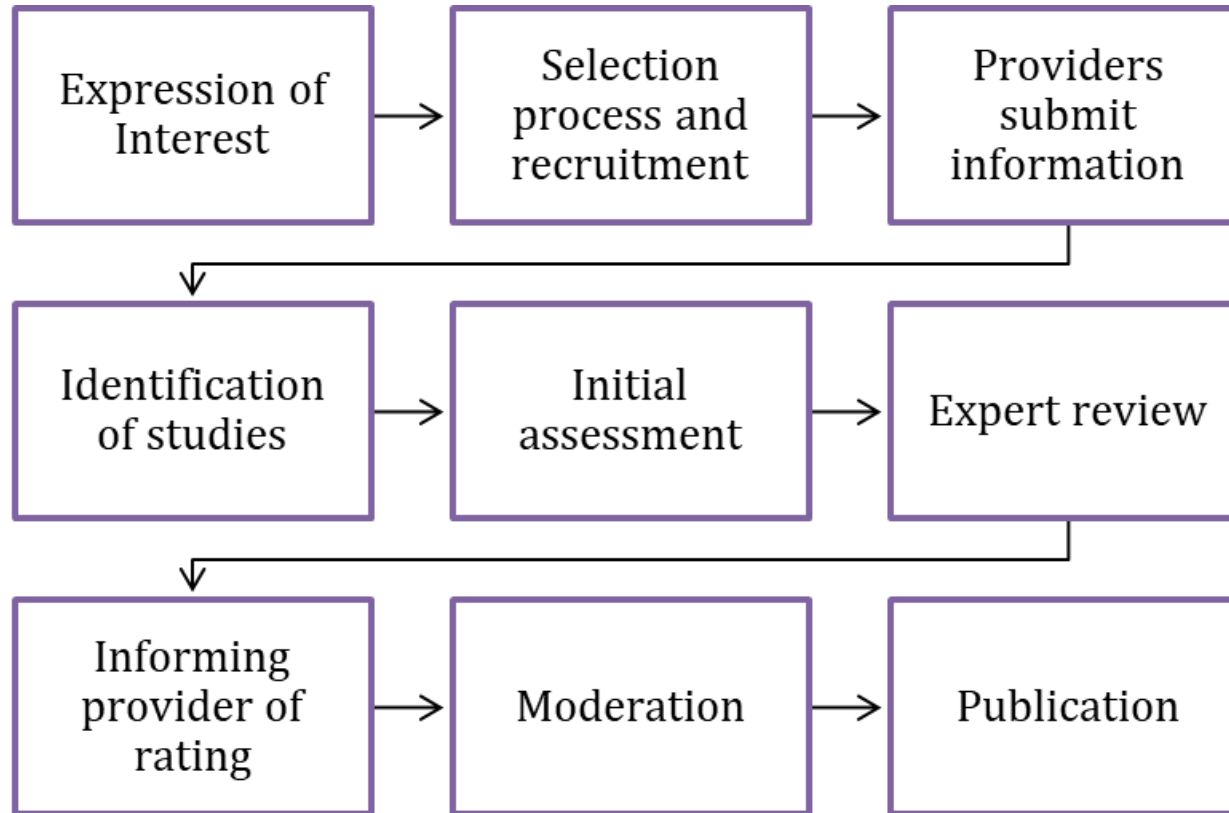
# Detailed information on evidence-base

## Study 1

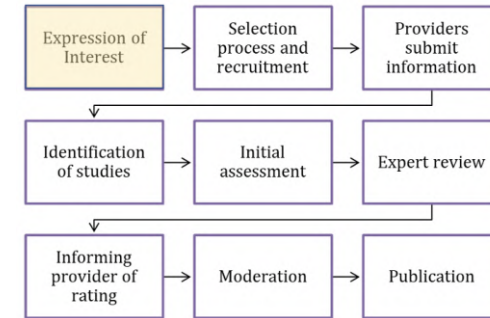
Citation:	Lowell et al (2011)
Design:	RCT
Country:	United States
Sample:	157 multi-risk urban mothers and children (between 6 and 36 months old)
Timing:	Post-test
Child outcomes:	Improved language Reduced behavioural problems
Other outcomes:	Reduced psychiatric symptoms Reduced maternal depression Reduced parental stress
Study rating:	3



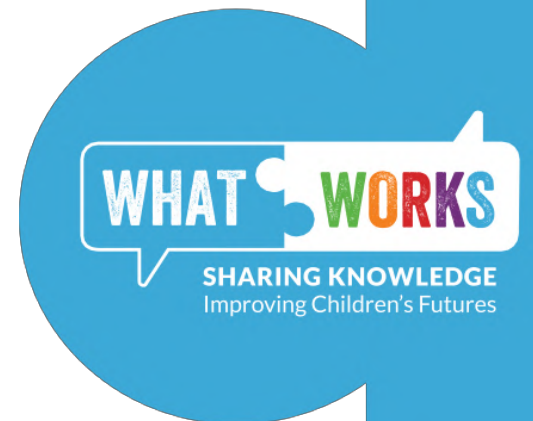
# How do I get my programme included on the Evidence Hub?



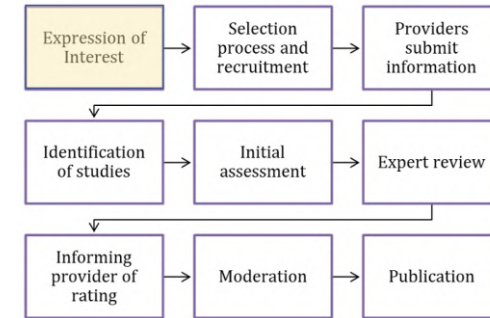
# Expression of interest and the call for submissions



- We want to hear from you about the great work being carried out in Ireland.
- Since September it has been possible to submit your programme to us to be considered for assessment to be included on the Evidence Hub. This submission period closes on the 8<sup>th</sup> November,
- Submitting is easy – please find the online form and guidance on the What Works website.
- We aim to include 10 of the programmes submitted via the call for submissions.
- Please note that the programmes included on the Evidence Hub will also be included on EIF’s Guidebook.



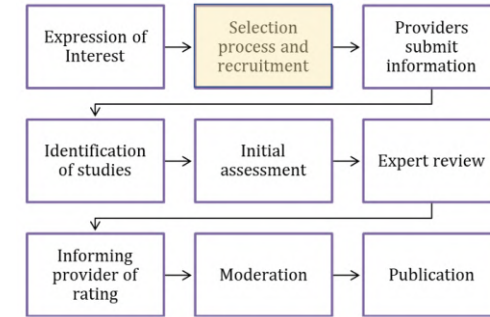
# Expression of interest and the call for submissions



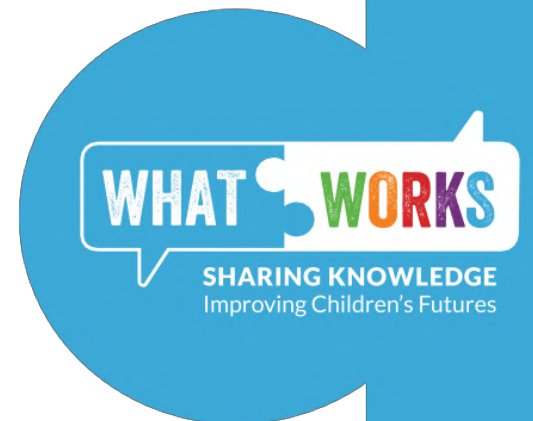
In short, we want to hear about:

- **You** – which organisation you work for, an email we can contact you at, and your relationship to the programme.
- **Your programme** – what activities are carried out, how it's delivered, its duration, who delivers it.
- **What it aims to do** – what outcomes for CYP does it aim to improve
- **Who it supports** – age of CYP, characteristics and level of need
- **What evidence there is** – the studies that have been conducted (Irish and non-Irish).
- **Delivery in Ireland** – where is it being delivered and to how many people.

# Selection process and recruitment

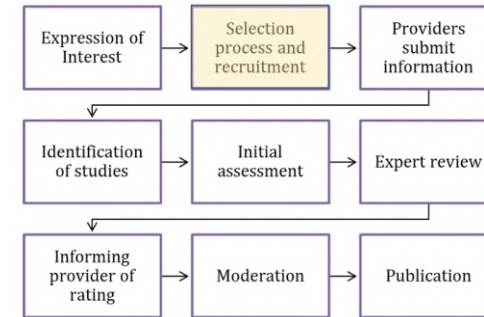


- We will select 10 programmes:
  - 5 will be assessed for potential inclusion in 2022-23, 5 in 2023-24.
  - We will prioritise programmes that explicitly aim to improve child outcomes, have promising or strong evidence of impact, have promising or strong evidence of impact from Ireland itself, and are more widely delivered in Ireland.
- We will get in touch with all applicants in November with the outcomes of the process and whether they will be taken forward for assessment – we will be able to provide feedback for unsuccessful submissions.

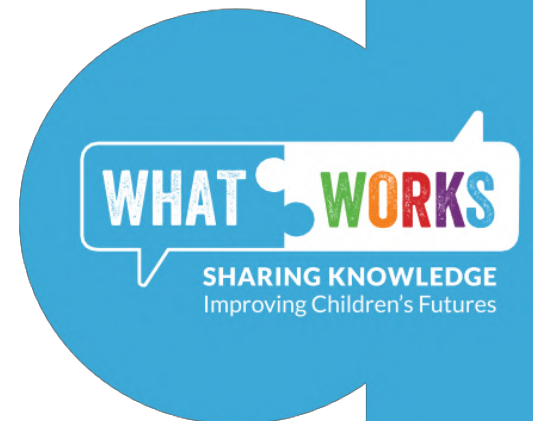




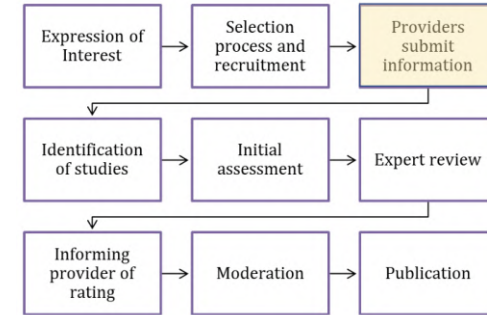
# Selection process and recruitment



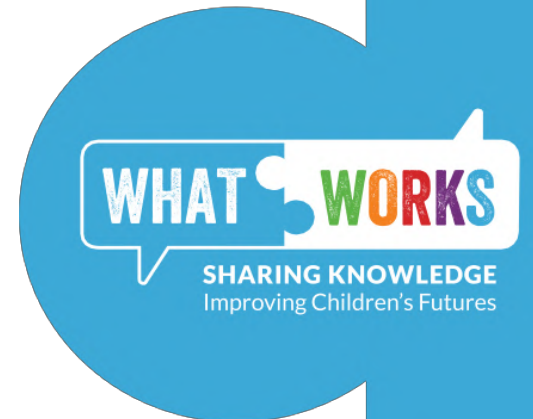
- Note that this stage and following stages only apply to submissions that have been selected for assessment.
- Successful applicants will be prompted to confirm their commitment to being assessed and to consent to a Terms of Reference. These will be shared with providers at the time, but boils down to:
  - Confirming understanding and consenting to the overall process (which will be summarised here).
  - Consenting to a process for appealing the assigned evidence rating should you disagree with us about what it should be.
  - Consenting to EIF ultimately retaining full and final discretion with regard to whether a programme is included on the Evidence Hub and the rating assigned, subject to the appeals process.



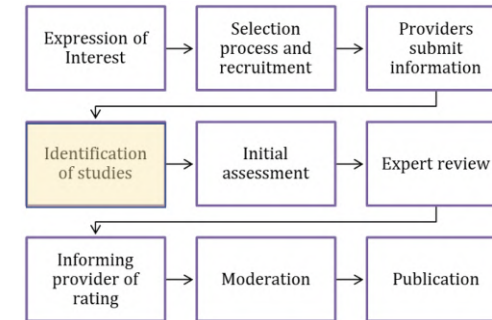
# Providers submit information



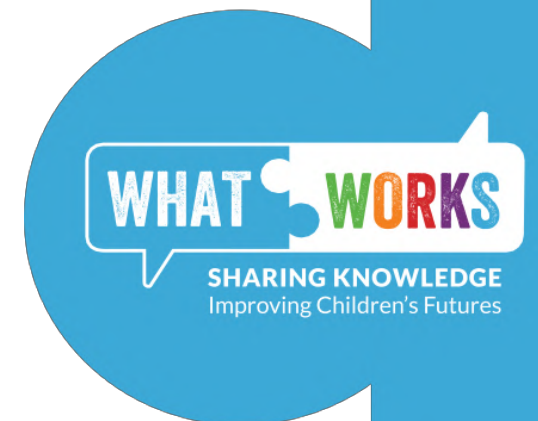
- Across 2 questionnaires we will ask for more detailed information on your programme, building on what you've shared with us in your initial submission.
- This is the material that will form the basis of your Evidence Hub entry. It is also the material which will be used to generate the cost rating.
- Further guidance will be provided to those whose submissions get to this stage, but we will ask for a range of information including:
  - **Information on practitioners** – how much programme training they receive, their background and qualification level, how long they spend delivering the programme
  - **Costs** – Of practitioner training, technical assistance and delivery materials
  - **Supervision and booster training requirements**



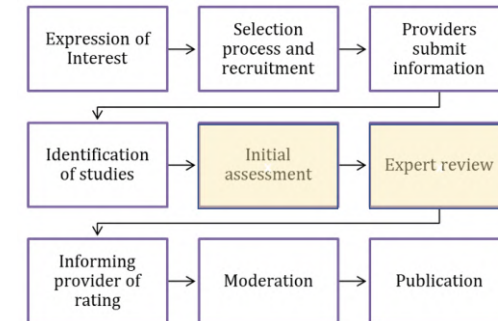
# Identification of studies



- At this stage, we will also confirm which evaluation studies are to be included in EIF's assessment.
- We will give you an opportunity to submit any evaluations you may have missed out of your initial submission.
- EIF will also conduct a literature search for any additional studies.
- A final full set of studies will then be confirmed with you.



# Initial assessment and expert review

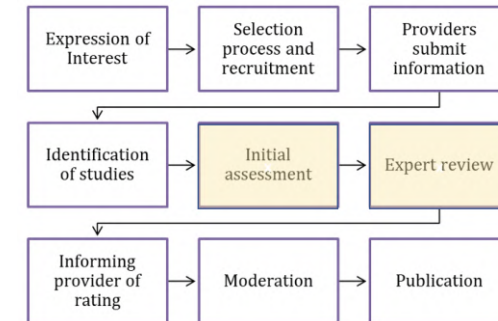


- EIF researchers will then apply the 34 evidence assessment criteria to each identified study and come to a provisional overall strength of evidence rating for your programme. This will be quality assured by senior researchers at EIF.
- If the programme is found to have preliminary (level 2) evidence or higher, then it will be recommended for inclusion on the Hub. If not, it will be included in a separate listing of programmes.
- This provisional rating and recommendation will then be scrutinised in detail at a review meeting. This meeting includes senior members of staff from EIF and at least one independent expert who has subject-matter knowledge in the area relevant to the intervention and expertise in research methods.
- The provisional rating may be changed as a result of this meeting, and is then agreed and finalised.

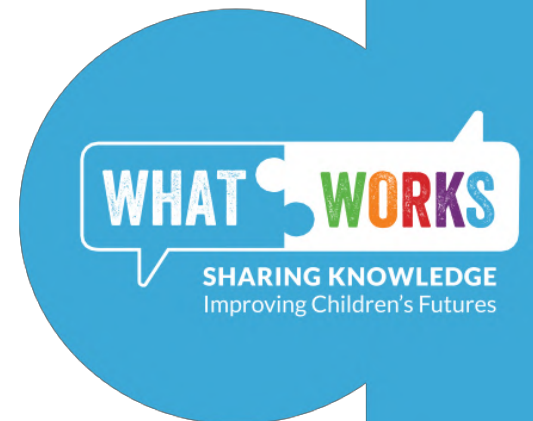
WHAT WORKS

SHARING KNOWLEDGE  
Improving Children's Futures

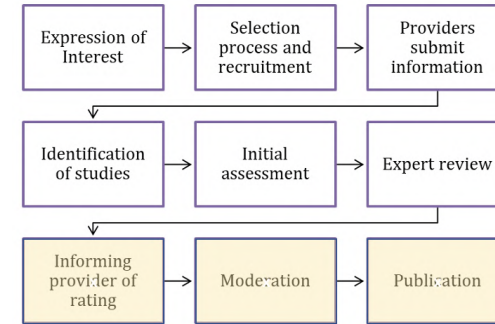
# Initial assessment and expert review



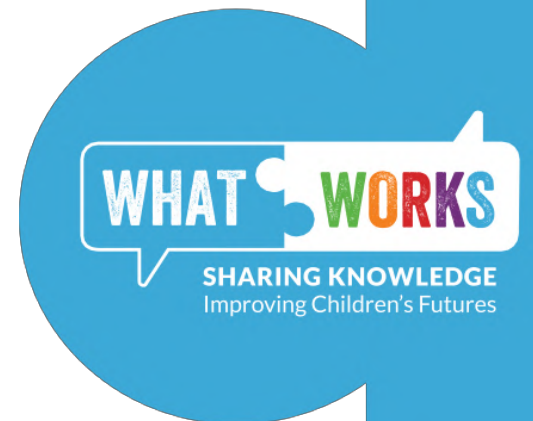
- On occasion we will find that a key piece of information that we need to confidently give an evidence rating is missing from a submitted evaluation report.
- In these cases, we will give a conditional rating (on the basis of what we know), but then give you the opportunity to provide this missing information, with the potential for the rating to be increased accordingly ahead of publication.
- This may require you to liaise with external, independent evaluators who have been involved in evaluations of your programme, to provide details that are missing from the report or additional analyses to confirm that a study meets EIF's evidence requirements.



# Informing provider of rating, moderation, and publication



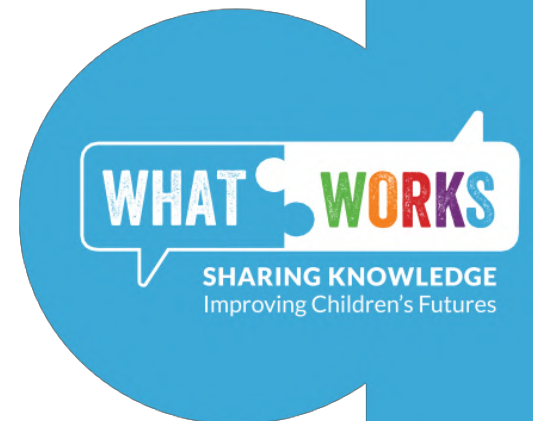
- This rating, along with all draft materials that will be presented on the Evidence Hub, is then shared with the programme developer/provider.
- Providers are given at least 3 weeks to digest the materials, request changes to wordings, and to request a reassessment of their strength of evidence rating if they wish to do so.
- A request for reassessment will be considered if it makes the case that a material error has been made in the assessment and that EIF's evidence assessment criteria have not been properly applied.
- This is requested in a written format. This will then be considered at an additional review meeting (a 'moderation meeting') which will include a different independent expert who was not involved in the initial rating.
- Programme developers/providers will be informed of the outcome of the moderation meeting, provided with a detailed justification for the outcome, and then the programme entry will go live on the Evidence Hub.



# What's next?

- How far along is development of the Hub and what are the next milestones?
  - Launch – DCEDIY plan to launch the Evidence Hub in early 2023. Pulling together the content and web development is underway.
  - Adding additional programmes –
  - Events – A range of webinars and events are planned over the next 2 years.

Key milestone	Provisional dates
Expression of interest period	September to 8 <sup>th</sup> November '22
Selection of programmes	November '22
Detailed submission of programme information and evaluation evidence by providers (first set of 5 programmes)	November '22
Initial assessment by review team (first set of 5 programmes)	December '22 to January '23
Detailed submission of <i>cost information</i> by Providers (first set of 5 programmes)	December '22
Review meetings to finalise ratings and communication with Provider (first set of 5 programmes)	February '23
Final moderation and confirmation of ratings (first set of 5 programmes)	March 23'
Programmes included in Evidence Hub (first set of 5 programmes)	March 23'



**Thank you for  
attending. We look  
forward to receiving  
your submissions and  
working with you**